

Company Profile



Designers of technology. Creators of value.

For more than 45 years, we have been developing and producing **complete, tailor-made extrusion lines, extruders and dies**, for special profiles and pipes in all thermoplastic materials.



Our 3 Pillars of Excellence



CUSTOM PROCESS

We guide the customer in every phase of the process, from the initial design, through consultancy on the formulation of the raw material, up to implementation.



KNOW-HOW

We provide not only equipment, but also the knowledge and training necessary to optimize the use of our machines.



INNOVATION

We are committed to supporting sustainability and efficiency, enabling our customers to successfully address current and future industry challenges.

Our Identity



Hi-Tech.

Hi-Human.

is the fusion of
technology and
human ingenuity.

- **Hi-Tech** sums up the drive for continuous innovation that guarantees unique extrusion solutions and added value to our customers' business.
- **Hi-Human** represents individual awareness within the team: each person's talent is recognised as an asset to the group. The centrality of the individual's contribution, in harmony with the others, translates into a guarantee of commitment to an excellent result, achieved with **competence, passion** and **care**.

Hi-Tech. Hi-Human. is more than a claim. It is the tangible sign of mutual respect between people, whether colleagues, customers or partners, who are dedicated to ambitious technological projects that can only be realised if they are based on valuable human relationships.



Hi-Tech. *Hi-Human.*

Reliability isn't just about mechanics.
It's about being human.



Designed with
Expertise



Made with
Passion



Built with
Care

Our Product Range

Extruders

- Single Screw Extruders
- Twin Screw Extruders (Conical and Parallel)
- Co-Extruders
- Auxiliary Extruders



Downstream



The line is made up of:

- Calibrating Table
- Take-Off Unit
- Cutting Unit
- Friul Filiere Software

Toolings

Profiles

- Multiple exits
- Coextruded
- With inserts
- Reinforced
- Special
- Composite
- Extreme materials

Pipes

- Special pipes
- Coextruded tubes
- Multilayer pipes
- Tubes with coextrusion of internal ribs or external stripes
- Coating of metal pipes
- Multi-exit pipes

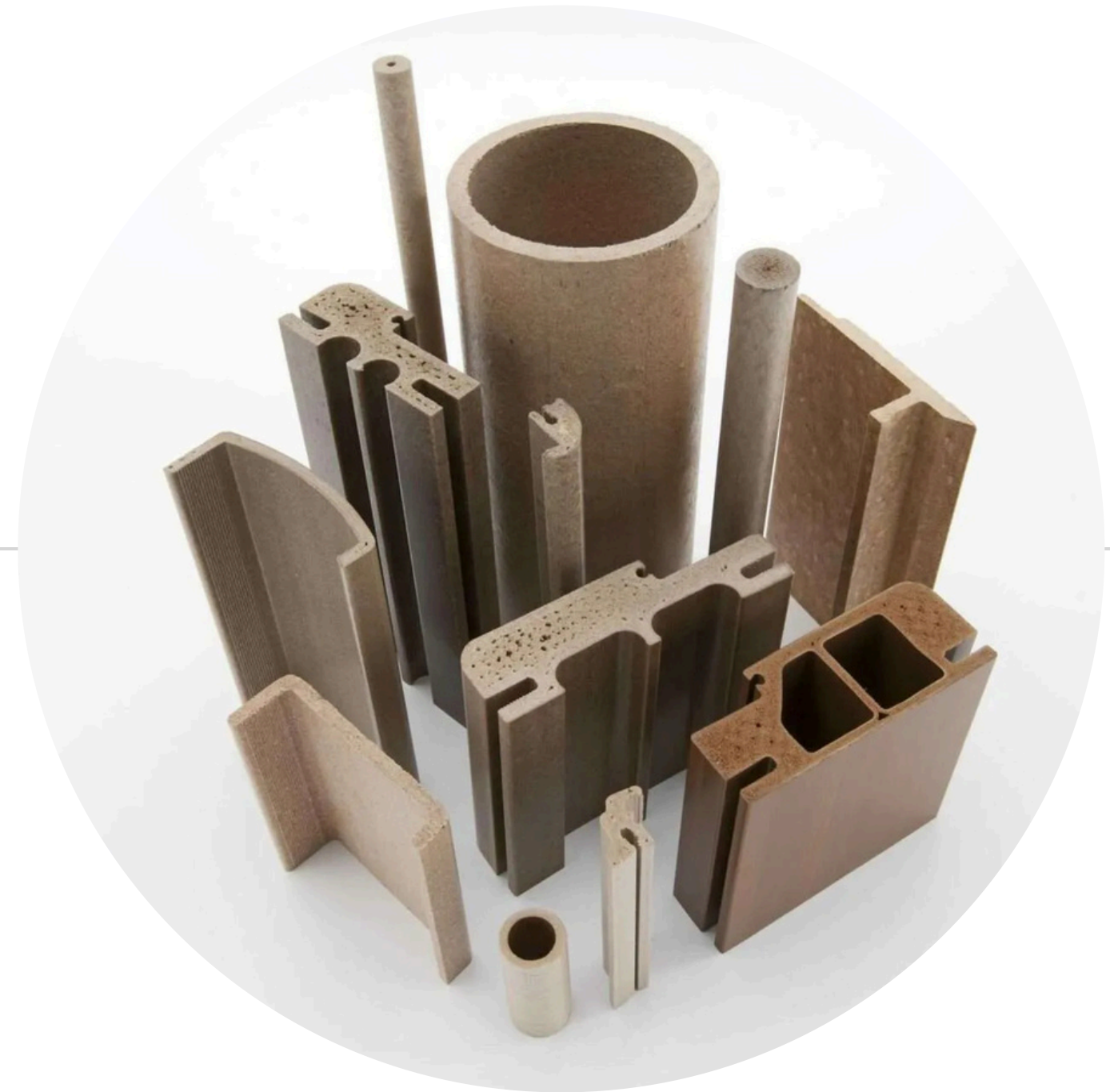


Our Technologies

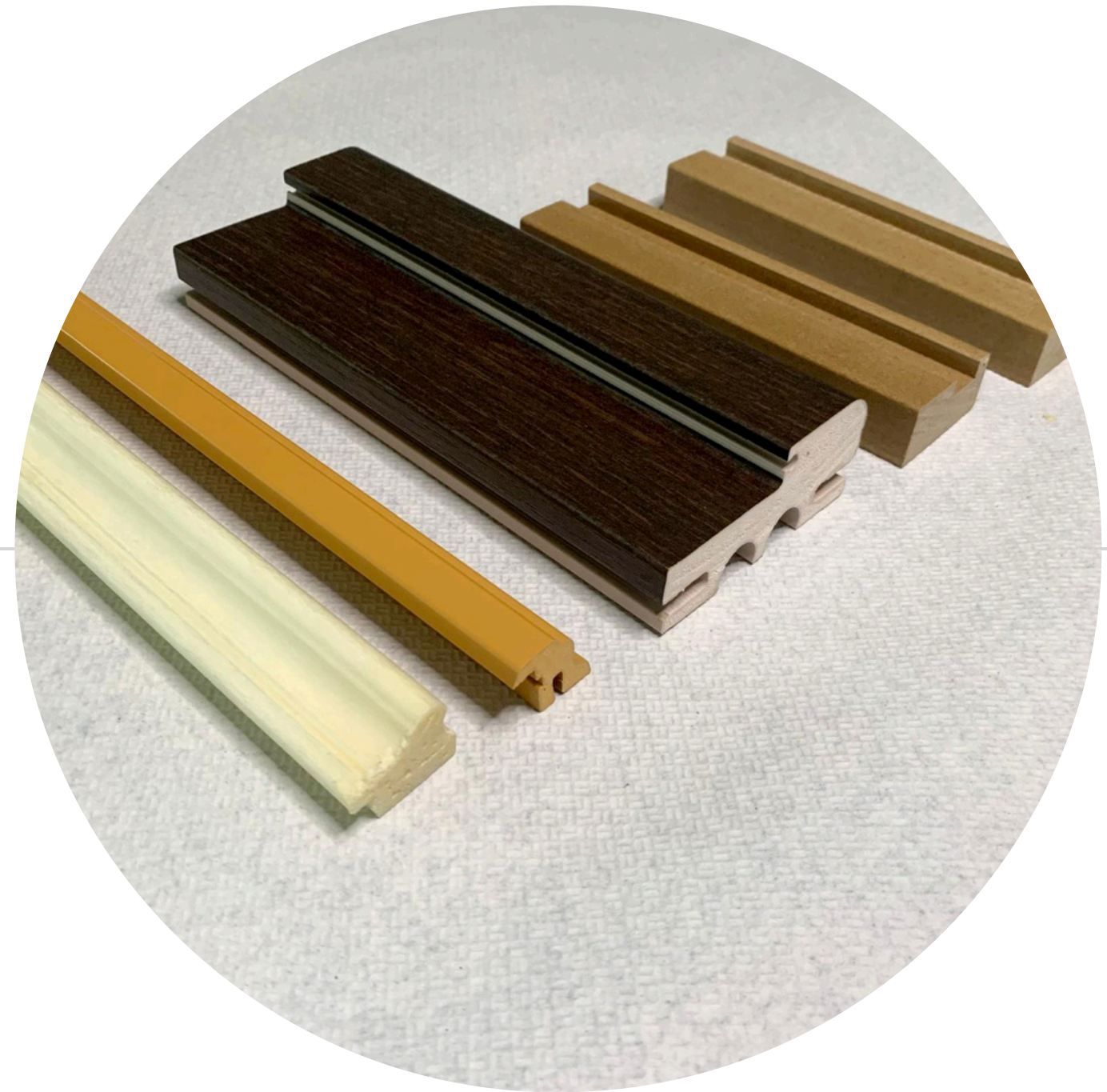
Biocomposites

FFC™ is a patented composite made up of a mixture of thermoplastic material and vegetable fibers, lightened by expansion.

Thanks to FFC™ it is possible to recycle and reuse not only the waste of vegetable fibers but above all the waste of thermosetting plastic materials classified as Special Waste (e.g. MDF).

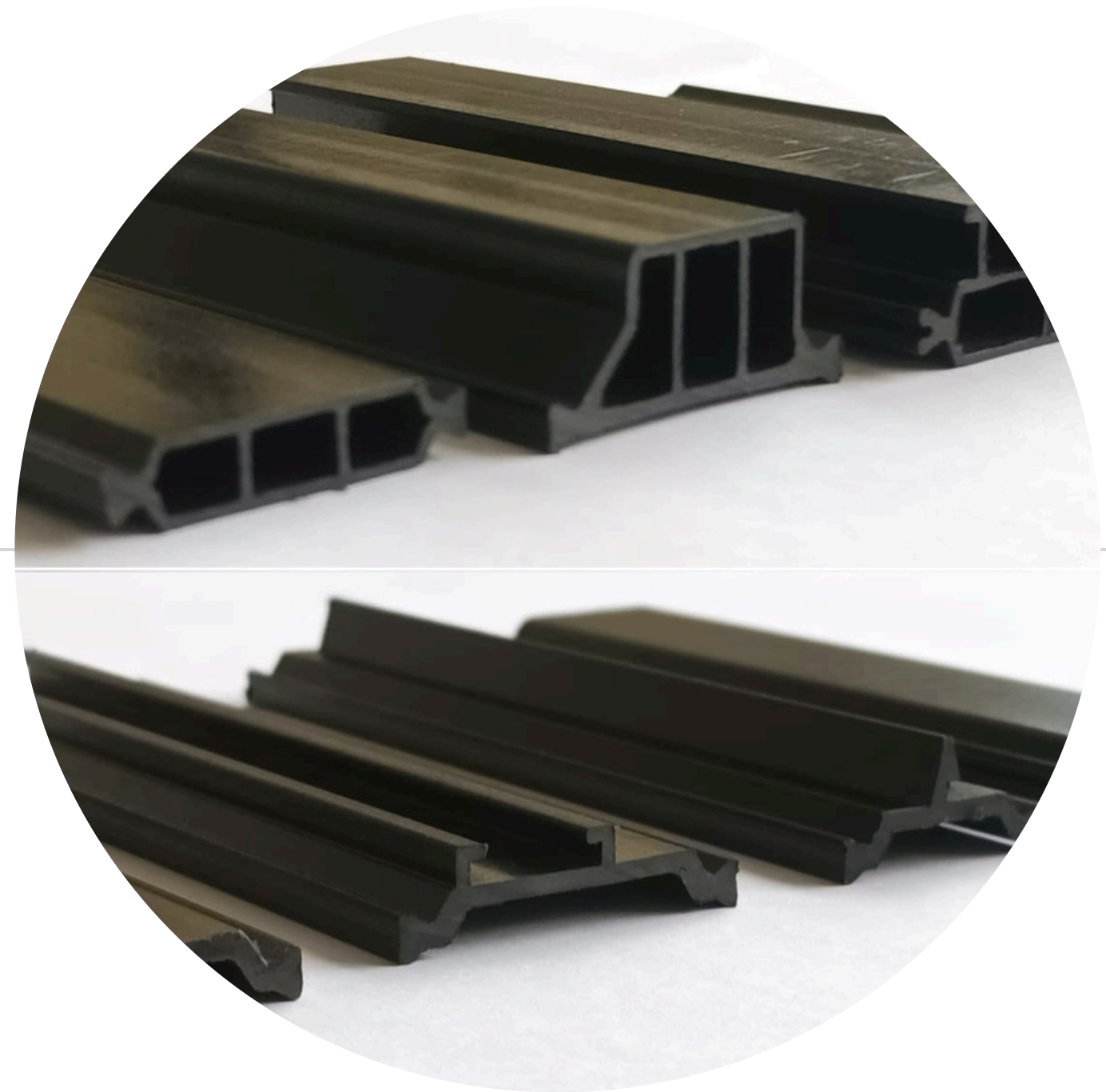


Foamed Profiles



- Wide range of materials (PVC, PA, PP, PS and PC).
- Application in various sectors, such as construction and furniture,
- Sustainability

Thermal Break Profiles

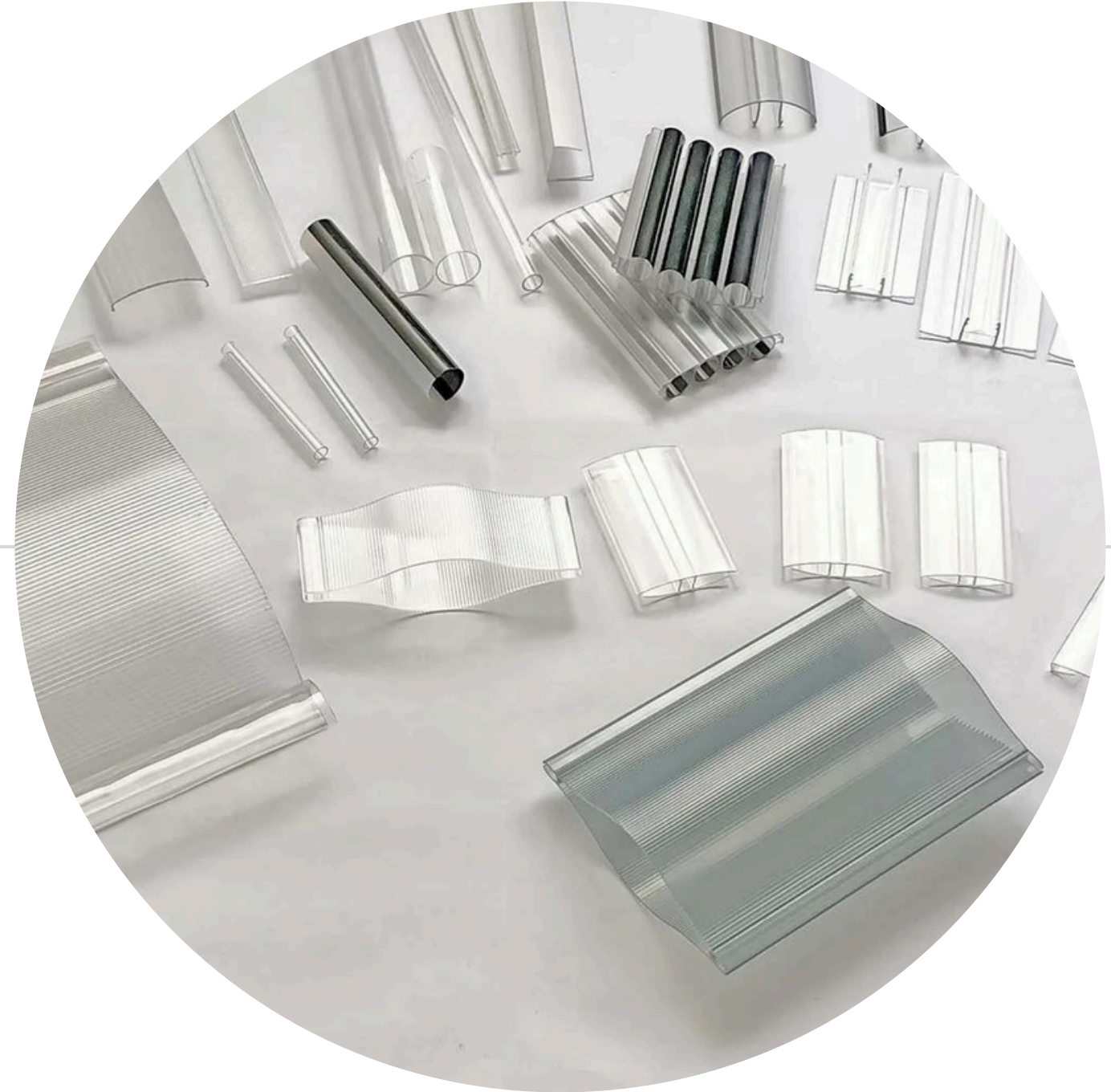


- Compact PA
- Foamed PA (Light Thermal Break)

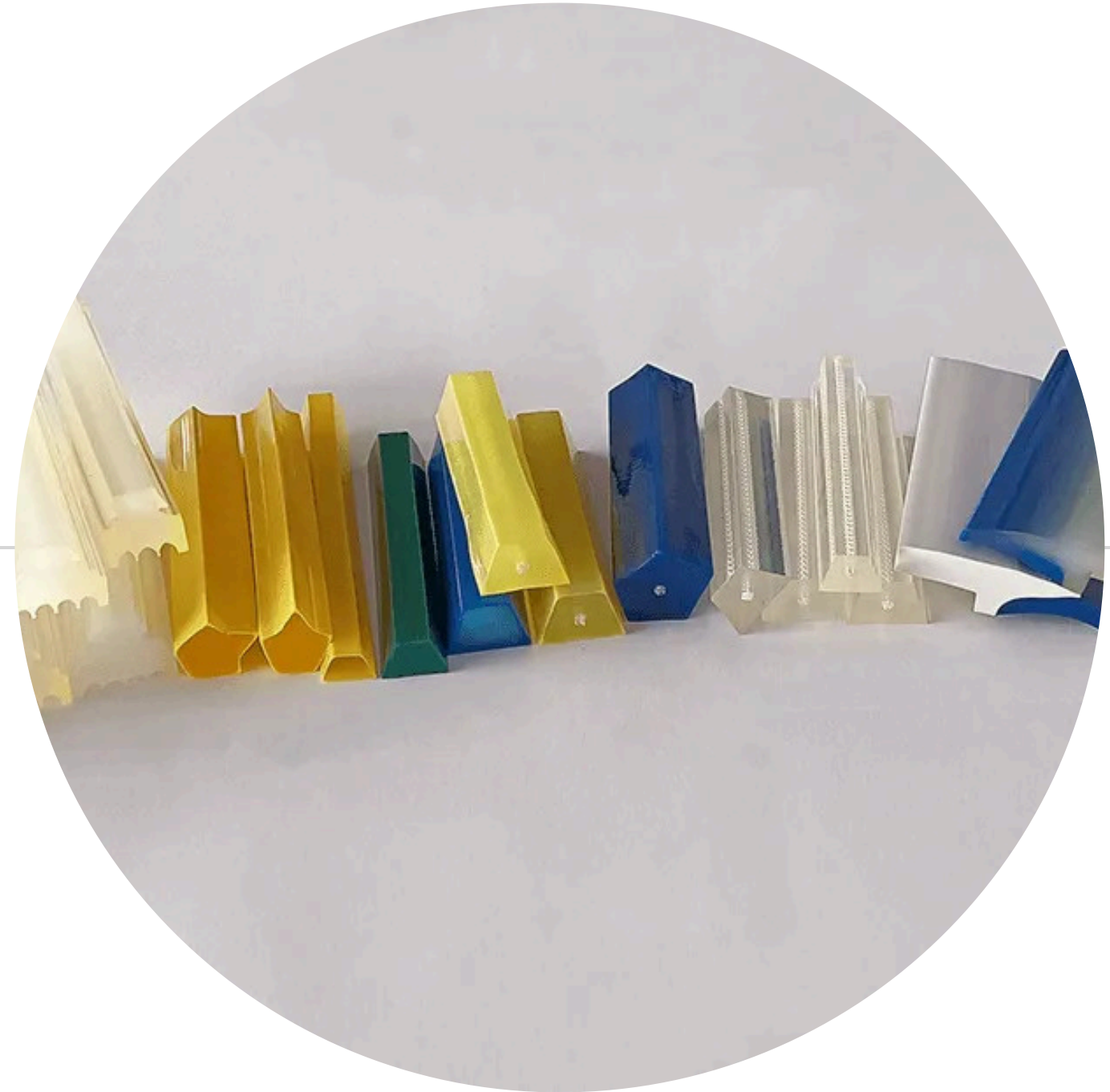
PC

Complete systems for the extrusion of polycarbonate profiles and pipes used in:

- Lighting sector
- Building sector
- Coextruded profiles and tubes



TPU



Complete systems for the extrusion of polycarbonate profiles and pipes used in:

- Guides for belts and straps
- Sliding profiles
- Solid rods
- TPU pipes coatings

TPV

TPV profiles are used in the Automotive industry, replacing EPDM thanks to their superior recyclability and performance:

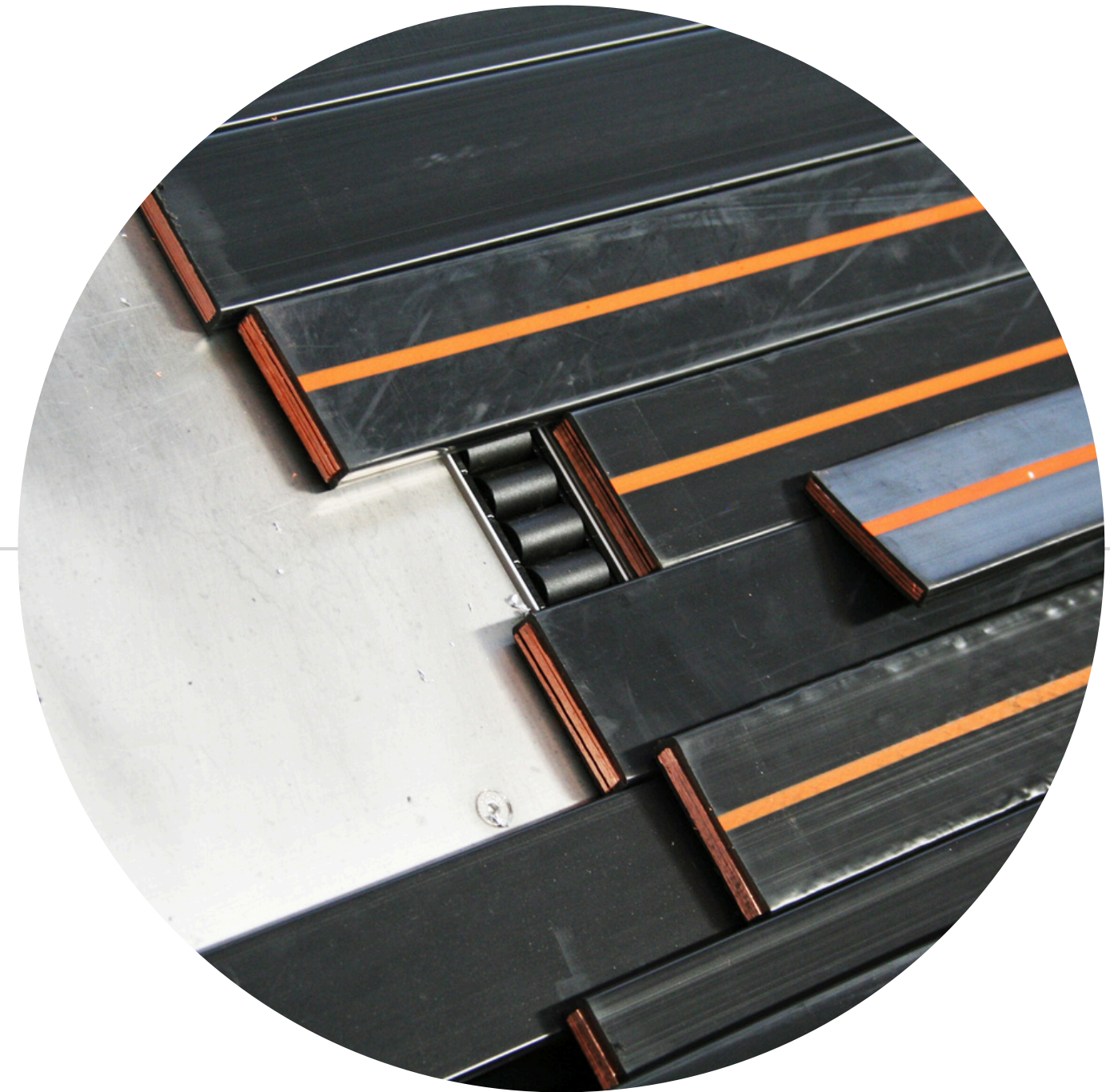
- compressed air and fuel tubes
- reinforced gaskets profiles & automotive seals



Metal Coextrusion

The metal coextrusion includes all types of metals, such as copper, aluminium, tin and more and is used in different sectors:

- household appliances
- electrical
- industrial
- automotive



Our Added Value

We are allies of your business.

Our commitment is to offer complete and customized **all-round solutions** for every need in plastic extrusion. We are committed to guiding each project from conception to completion, ensuring a service that goes **beyond the supply of machinery.**

Lead Contractor

We act as a single point of contact, coordinating every phase of the process: from design to production, up to the installation and commissioning of the machines.

Partner of Success

We are at your side to offer ongoing assistance, answer your questions and resolve any problems. We are true partners in your growth and innovation journey.

In-house Projects

All our machines and toolings are designed and manufactured in-house at our Friuli Venezia Giulia headquarters.

Process Know-how

Not only do we supply the machines, but we also transfer all the necessary know-how to optimise their use.



Our target
is your
business
value.

Thank you for your attention.

T +39 0432 961811
E. info@friulfiliere.it
www.friulfiliere.it

